

OPERATION MANUAL
FOR
DIAGNOSTIC ULTRASOUND SYSTEM
Aplio i900 / Aplio i800 / Aplio i700
MODELS TUS-AI900/TUS-AI800/TUS-AI700
[FUNDAMENTALS]
(2B771-141EN*Z)

CAUTION:

In the USA, federal law restricts this device to sale and use by or on the order of a physician.

IMPORTANT!

Read and understand this manual before operating the equipment. After reading, keep this manual in an easily accessible place.

CANON MEDICAL SYSTEMS CORPORATION

© CANON MEDICAL SYSTEMS CORPORATION 2016-2019
ALL RIGHTS RESERVED

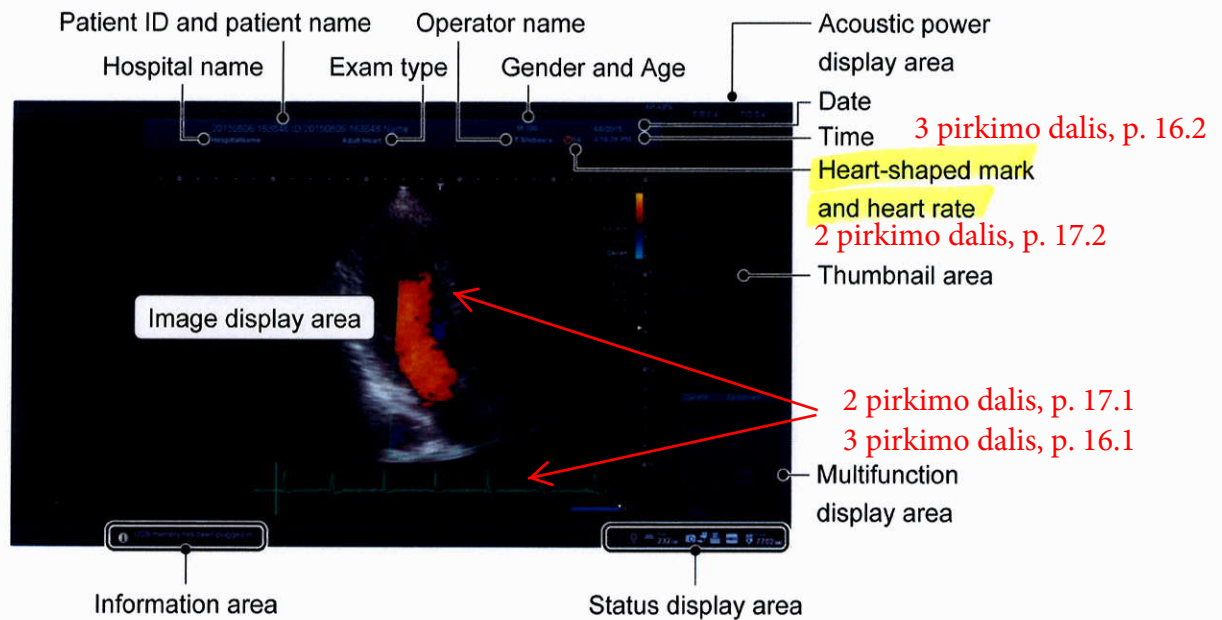
Issued : 2019-09


10. Basic Screen

10.1 Display of Various Data Items


In addition to ultrasound images, various data items are displayed on the monitor.

This section describes the screen display common to all modes. Refer to section 14 "Display and Operation in Each Mode" for the display specific to each mode.



NOTE: 1. The free space on the hard disk is displayed at the bottom of the screen as  "232 GB". If there is less than 35 GB of free space, the icon is highlighted in yellow. The color of the icon changes to red when the free space falls below 20 GB. When the free space falls below 1 GB, the message [HDD is full. Please delete some images in Patient Browser and try again.] is displayed in the information message display area on the screen and no more data can be stored. Delete unnecessary data before saving new data.

* For the data deletion procedure, refer to section 2 of the Operation Manual <<Applications volume>>.

2. When  at the bottom of the screen lights, it indicates that the system is ready to output images to the printer. Confirm that printing is completed by checking the printed images output from the printer. Note that the next print operation cannot be performed while this icon is lit. Wait until the icon goes out before performing the next print operation.

6.2 Main Panel

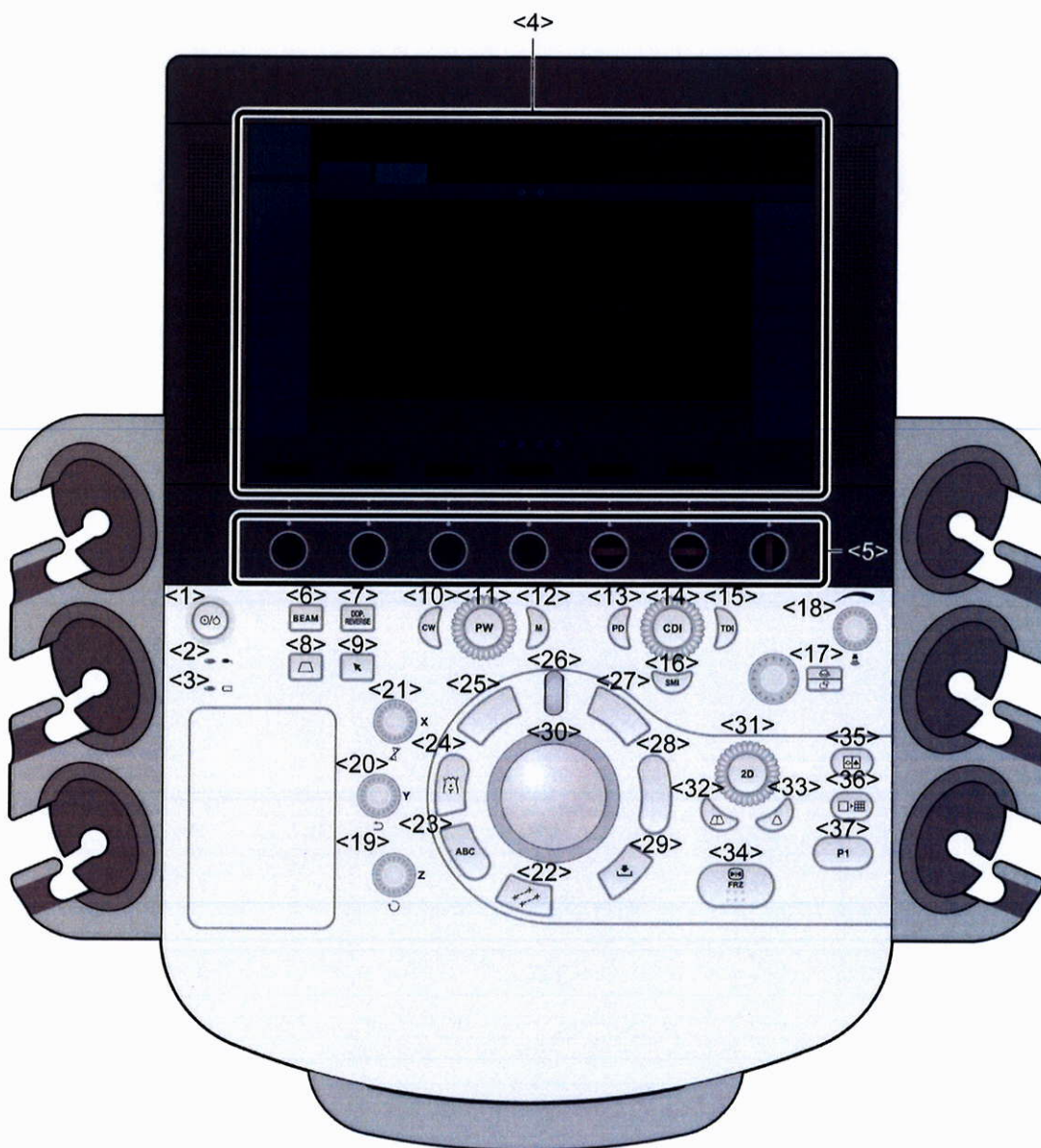
NOTE: Remove the protective sheet attached to the touch panel before using the system. If the system is used with the protective sheet attached, touch panel sensitivity is reduced.

The default switch layout is shown in the figure below:

1 pirkimo dalis, p. 20.1

4 pirkimo dalis, p. 15.1

- The functions assigned to the switches can be changed. Therefore, the actual switch settings of the system may differ from the default settings described in this manual. Confirm the Output, Store, Freeze, and other important settings before using the system.
- It is also possible to change the positions of switches related to measurements, modes, or printer output (user function switches). To change the settings, contact your Canon Medical Systems service representative.



- NOTE: 1. The Patient Registration screen appears different depending on the selected examination region.
2. Information can be entered for the item in the focus frame (blue frame). The focus frame can be moved as follows.

• Software keyboard :



• Main panel :



(Wheel)

<<Regions examined (Exam types)>>

Region examined	Exam type	Region examined	Exam type
[Abdomen]	Abdomen general	[Neo-Head]	Neonatal head
[Carotid]	Carotid arteries	[Neo-General]	Neonatal abdomen general
[Thyroid]	Thyroid glands	[Neo-Hip]	Neonatal hip joints
[Breast]	Breast, including mammary glands	[PV Venous]	Peripheral blood vessels (veins)
[OB]	Obstetrics	[PV Arterial]	Peripheral blood vessels (arteries)
[GYN]	Gynecology	[Digits]	Peripheral blood vessels (fingers and toes)
[Endo-Vaginal]	Endovaginal	[MSK]	Musculoskeletal
[Fetal Heart]	Fetus cardiovascular	[Prostate]	Prostate gland
[Adult Heart]	Cardiovascular	[Kidney]	Kidneys
[Pediatric Heart]	Pediatric cardiovascular	[Testes]	Testes
[Coronary]	Coronary arteries	[OTHER]	Others
[TCD]	Transcranial Doppler	[M-TEE]	Transesophageal

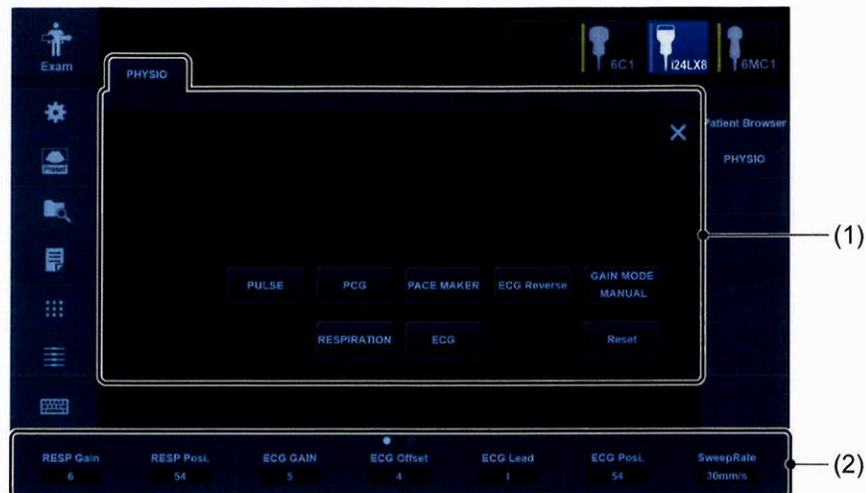
1 pirkimo dalis, p. 1.1; 1.3; 1.4

2 pirkimo dalis p. 2.1; 2.2; 2.3; 2.4

3 pirkimo dalis p. 2.1; 2.2; 2.3; 2.4

4 pirkimo dalis, p. 1.1; 1.2; 1.3

12.3.2 Adjustment using the touch panel



(1) Main operation area

Item	Description
PULSE	Shows/hides peripheral pulse signals.
PCG	Shows/hides the PCG waveform.
PACE MAKER	Used for ECG. Reduces R-wave false triggers due to pacing pulses from a patient with a pacemaker.
ECG Reverse	Used to invert the ECG waveform (enabled for real-time display).
GAIN MODE MANUAL	MANUAL : Used to adjust the gain for ECG/Pulse/RESP/PCG. AUTO : Used to adjust the above gains simultaneously. [ECG GAIN] changes to [AUTO GAIN], while the individual controls for [RESP Gain], [PULSE Gain], and [PCG Gain] are disabled in the parameter area.
RESPIRATION	Shows/hides respiration signals. 2 pirkimo dalis, p. 17.3
ECG	Shows/hides the ECG waveform.
Reset	Resets the ECG waveform to the standard position if it is disturbed.
X	Closes the menu.

14.7.4 Adjustment using the touch panel



(1) Main operation area

Item	Description
HD Zoom	Used to set the zoomed image quality.
Invert	Used to automatically reverse the flow direction determined based on the Color and Doppler steering angles.
Auto Trace	Used to switch between showing and hiding the Doppler trace line.
HighVelocity D>C	Used to set high flow velocity mode to ON/OFF in 2D+PW mode .
Triplex	Used to enable/disable simultaneous real-time display of the 2D (Color) image and PW image when switching from a Color mode to PW mode.
Wide View	Used to start trapezoid scan.
TwinView	Used to display the real-time 2D image and Color image simultaneously.
Real Mode 2D REAL	Used to set which image is shown real-time when Doppler mode is entered from 2D (CDI) mode. [2D REAL]: 2D (CDI) images are shown real-time. [MD REAL]: Doppler mode images are shown real-time.
Indep. Steer ^{*1}	Used to switch to an oblique scan with independent operation for Color (CDI/Power/SMI) steering and Doppler steering. ON : Independent operation for Color steering and Doppler steering. OFF : Common operation for Color steering and Doppler steering.
Steer Reverse ^{*1}	Used to reverse the oblique scan angle (not effective when the Doppler oblique scan angle is 0°).

2 pirkimo dalis, p. 12.5

3 pirkimo dalis, p. 11.5

OPERATION MANUAL
FOR
DIAGNOSTIC ULTRASOUND SYSTEMS
Aplio i900 / Aplio i800 / Aplio i700
TUS-AI900/TUS-AI800/TUS-AI700
OPTIONAL APPLICATIONS
(2B771-376EN*C)

IMPORTANT!

Read and understand this manual before operating the equipment. After reading, keep this manual in an easily accessible place.

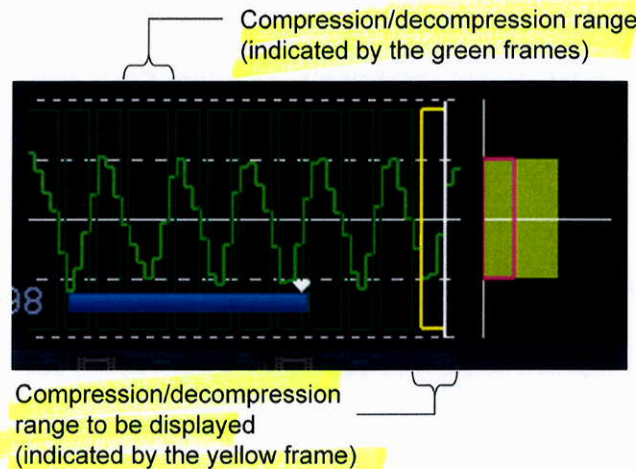
CANON MEDICAL SYSTEMS CORPORATION

© CANON MEDICAL SYSTEMS CORPORATION 2018
ALL RIGHTS RESERVED

Issued : 2018-09


4 Cine operations

NOTE: 1. Cine frame-advance playback is performed for the compression/decompression range (indicated by the green frames) in Elastography mode.



2. When a video image is saved during or after cine operations, the number of cine memory images is limited to 200 images.

(1) Press  to change the trackball function (multifunction) to .

(2) Select the compression/decompression range to be displayed (indicated by the yellow frame) using the trackball or .

* To specify the playback range, set the start/end points using the white line on the right side of the frame.

* Refer to the Operation Manual <<Fundamentals volume>> for details regarding cine operations.

2 pirkimo dalis, p. 14.2

TDI Radial Strain

